

“The completed project should be absorbed gracefully into the urban fabric. Therefore the photographs may not on first glance make obvious what has been achieved in the project. It is only by reference to the survey photographs and plans that the true complexity and scale of the restoration can be seen.”

Erected in 1828, the restoration of Thurles Courthouse included the insertion of clear and controlled circulation routes within the building together with logical and useful congregation areas. The courthouse did not have an entrance hall so this was achieved by an insertion within the very long courtroom. The partition to the inserted entrance hall is clad on the courtroom side with specially designed hardwood acoustic panels to match the furniture; all wood was from

sustainable sources. The arcade to the front was re-opened and fitted with frameless glass. The flanking wings (extended forward in the 1960s) were cut back to re-establish the dominance of the central block. The limestone facade was conserved and repaired. The slating on the main roof was not replaced; the torching to the underside of the slates was repaired rather than re-slatted, thus conserving all the slates.

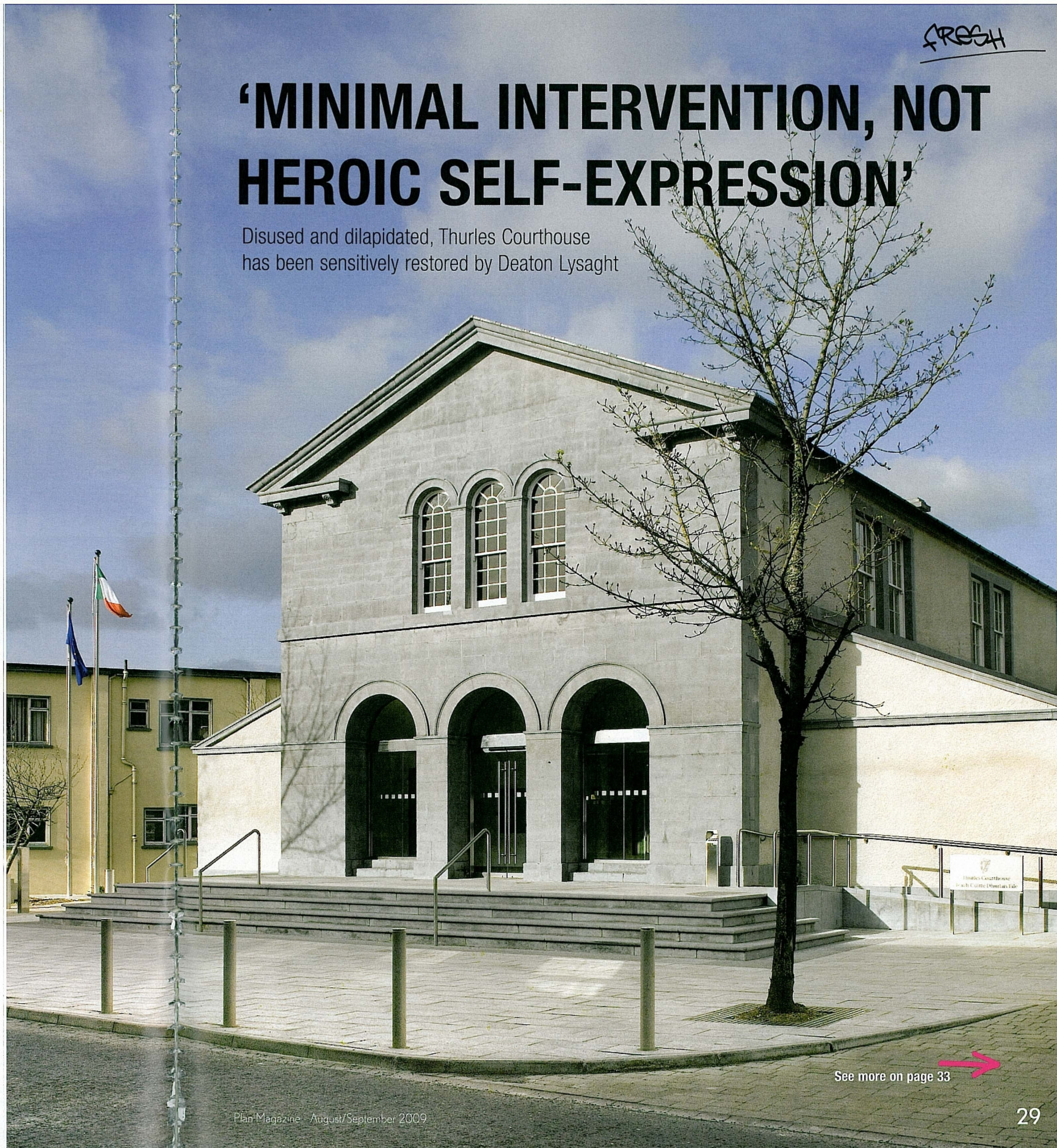
The office extension to the rear is a 2 storey over-basement block linked to the building by way of a double height atrium, clad in pre-patinated copper and white stucco.

A new stepped plaza re-integrates the courthouse into the town plan and provides a congregating area. Level access is provided at all entrances.



‘MINIMAL INTERVENTION, NOT HEROIC SELF-EXPRESSION’

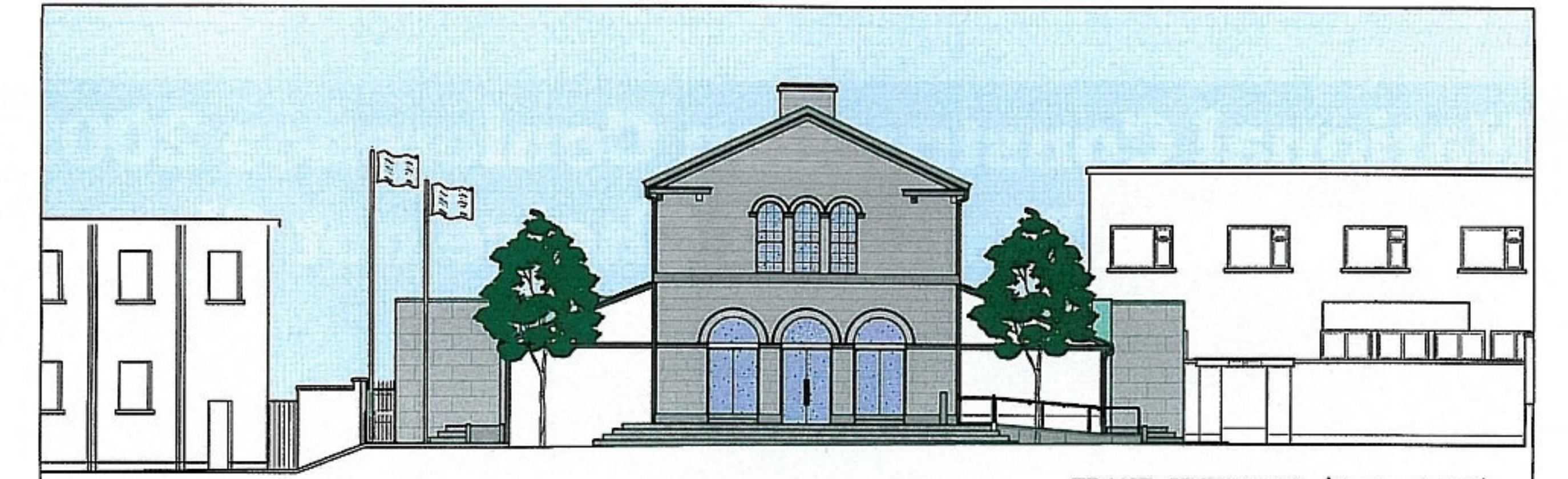
Disused and dilapidated, Thurles Courthouse has been sensitively restored by Deaton Lysaght



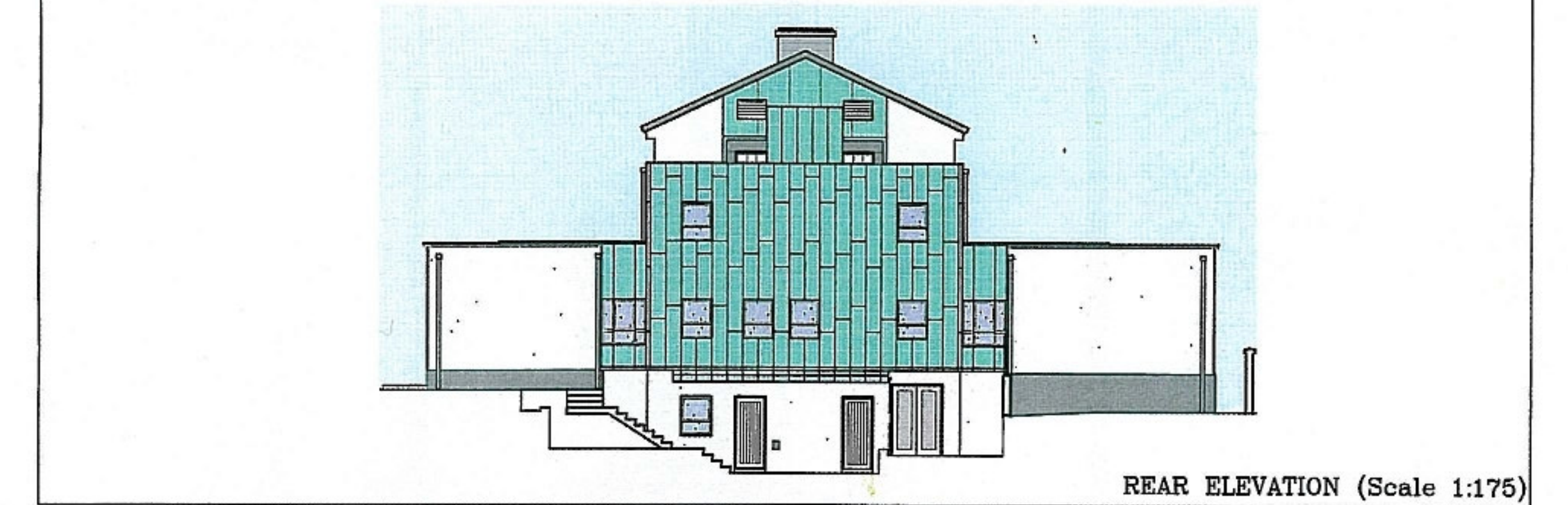
See more on page 33

FRESH

FRESH



FRONT ELEVATION (Scale 1:175)



REAR ELEVATION (Scale 1:175)



SOUTHEAST SIDE ELEVATION (Scale 1:175)

Architects/Conservation
Architects: Deaton Lysaght (John Deaton, Elisabeth Churchard)
Structural Engineers: JB Barry & Co
Services Engineers: Clarke & Associates
Quantity Surveyors: Duffy Gaffney Partnership
Acoustic Consultants: AWN Consulting
Main Contractor: Pierce Healy Developments

